



*“Today marks the beginning of your next steps at Clifton, as you embark on the next phase of your education. Your journey to GCSEs and beyond begins now and **you** are in the driving seat!”*

Clifton Community School Curriculum & Options 2022

“STRIVING TO GIVE OUR STUDENTS THE BEST POSSIBLE LEARNING OPPORTUNITIES”



Options and Opportunities

OUR CURRICULUM INTENT



“At Clifton Community School we want all students to leave **able** and **qualified** to play their full part in an ever-changing world.”

Phase 1: Year 9

YOUR CURRICULUM IN Y9 AT CLIFTON



You will continue to study Core subjects for 16 lessons



You will choose 2x Options to study for the other 4 lessons

Learning Over Time

Build on what you have learnt in Y7 & 8.

Foundation Year

You will gain the skills and knowledge you need to continue with one subject in that particular group/subject area.



Year 9 Core Subjects

In Year 9, your **Core Curriculum** will be made up of the following subjects:

Core Subject	Number of Lessons
Maths	3 lessons
English	3 lessons
Science	3 lessons
PE	1 lesson
Spanish/French	2 lessons
History	2 lessons
Geography	2 lessons



Year 9 Options Subjects

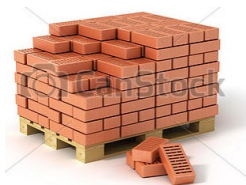
You will also study two options from the list below:

Options Subjects
1. Art / Food
2. ICT / Business
3. Design Technology
4. Health Science
5. Political Science
6. Performing Arts
7. PE

**optional Dance

Year 9 Options Subjects

EACH OPTION IN MORE DETAIL



01

Art / Food

- Fine Art
- Hospitality

02

ICT / Business

- ICT
- Business

03

Design Technology

- Engineering
- Construction
- Product Design

04

Health Science

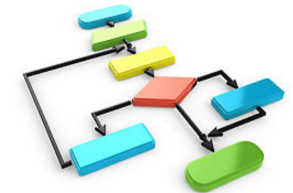
- Childcare
- Health & Social Care



05

Political Science

- Citizenship
- Religious Studies



**optional Dance



06

Performing Arts

- Music
- Drama



07

PE

- Sport Studies
- Duke of Edinburgh



You will be sent a form via email. You need to choose 4 options in order of preference

Phase 1: Year 9


CHOOSING YOUR OPTIONS

Options Subjects
1. Art / Food
2. ICT / Business
3. Design Technology
4. Health Science
5. Political Science
6. Performing Arts
7. PE (with optional Dance)

My Preference	Subject Area
1 st Choice	DT
2 nd Choice	Performing Arts
3 rd Choice	Craft & Design
4 th Choice	IT

Phase 2: Year 10

YOUR CURRICULUM IN Y10 AT CLIFTON



You will continue to study Maths, English, Science, PE and your language choice.



You will choose from History or Geography

Specialising

You will also choose two Options Subjects to **Specialise in**

Phase 2: Year 10

AN EXAMPLE OF YOUR CHOICES IN Y10

In Year 9 you will study all the subjects in the Suite...

In Y10 you will choose one for GCSE...

Social Science

- Child Development
- Health & Social Care

Health & Social Care

Design Technology

- Engineering
- Construction
- Product Design

Engineering

Specialising

You will also choose two Options Subjects to Specialise in



Your Options Evening will take place at School on Wednesday 18th January

Options Evening

AN OPPORTUNITY TO SPEAK TO YOUR TEACHERS

- **VITAL INFORMATION**

It is very important that you attend so you can find out more about all the options available to you.

- **PRESENTATION FROM MRS LENG**

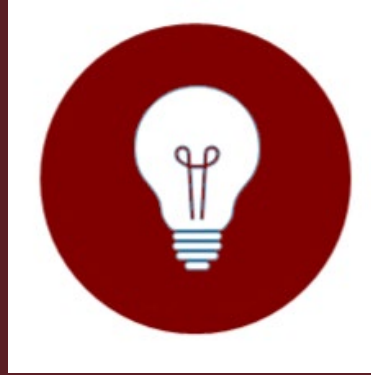
You and your Parents will attend a presentation with the Headteacher to find out more about the Options Process.

- **SUBJECT PRESENTATIONS**

You will also go around the sports hall and speak to your subject teachers about what each Option involves.

Next Steps

These steps will happen over the next few weeks.



DO YOUR RESEARCH

- Speak to your teachers.
- Attend Options Evening.



MAKING A DECISION

- You will be sent a Google Form to select your options at a later date
- Complete this by Friday 27th January
- A member of SLT will come and see you to answer any questions.

Making Your Decisions

DO choose a subject area that...

- You enjoy
- You think is one of your strengths
- Suits your personality
- Matches your ambitions
- Suits your learning style



DO NOT choose a subject area because...

- You like the teacher
- Your friends are doing it
- Your parents told you to
- You think it's easy



THE PROCESS

How we will support your decisions



Assembly



Careers Workshops



Options Evening



Discussion & Decision



Interviews

Where Can I Go For Advice?

THERE IS LOTS
OF SUPPORT
AVAILABLE IN
SCHOOL



Mr Mosley
and
Miss Hall

amosley@cliftonschool.org
jhall@cliftonschool.org

Pastoral
Team

Mrs Leng & Mr Tipper

aleng@cliftonschool.org
mtipper@cliftonschool.org

SLT

Mrs Webster
Miss Brown (Mon/Tues)

jwebster@cliftonschool.org
sbrown@cliftonschool.org

Careers
Experts